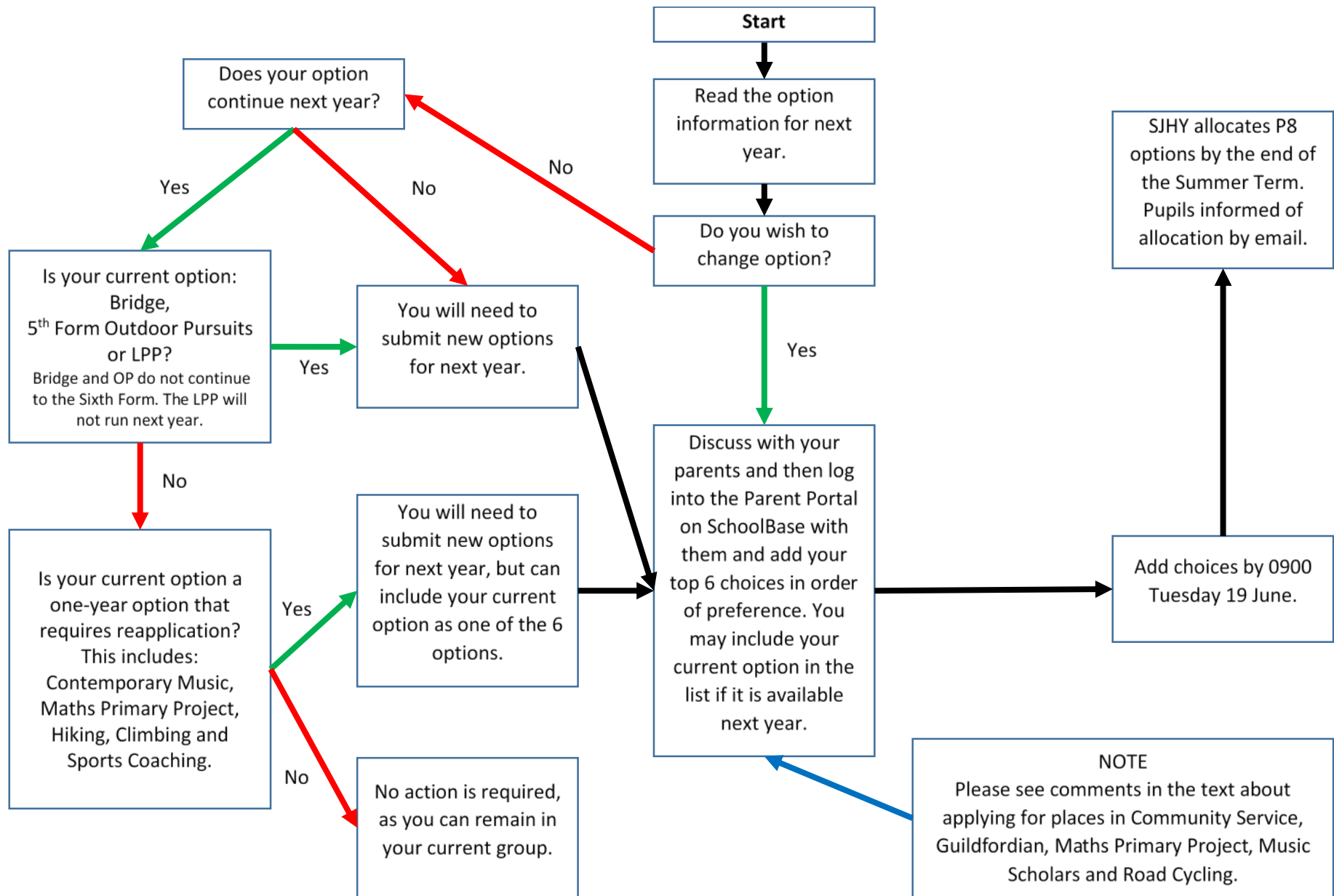


## General Information Period 8 2021/2022

- This document provides important information about P8 options available to boys who will be in the Fifth Form and above in September.
- The year groups that the options are open to are shown for each option. They relate to the year that pupils will be in from September (e.g. Current 5<sup>th</sup> Form will thus be L6). All options are shown here, whether or not they are available to your year group. Check the information carefully.
- Please note that not all options are available as a continuation from your current year. Outdoor Pursuits and Bridge are not available in the Sixth Form. The Latin Primary Project will not run next year.
- Some options also only last one year, so all boys are removed from the option at the end of each year. This generally applies to oversubscribed groups. Boys in these groups have to reapply for 6 options as normal. They can include their current option in the list if they wish. They will however generally be a lower priority for allocation than boys who were not in it this year. The options this applies to are: Contemporary Music, Maths Primary Project, Hiking, Climbing and Sports Coaching.
- The application form is on the last page. Boys must opt for **6 choices**.
- Boys who do not state 6 choices or fail to reapply correctly will be allocated last and take the final places available.
- Boys opting for Community Service must discuss it with RJR. The placements are skill-specific and Mrs Rathmell fills spaces as suitable applicants present themselves. If Mrs Rathmell allocates you a place, then you only need to complete 1 choice on the options form.
- Boys opting for Music Scholars and Road Cycling must see staff members in charge to confirm suitability. Boys confirmed suitable are however not guaranteed to get allocated to the option and must include 6 options on their form. There is a written task required if you wish to apply to the Guildfordian and a short interview for the Maths Primary Project. You must still put 6 options if applying for the Guildfordian or the Maths Primary Project.
- Deadline for the online form to be completed is **0900 on Tuesday 19 June**.
- Any questions to SJHY.

The process is shown on the next page:



<b>Adventure Film Making</b>	<b>NWG</b>	<b>U6 only</b>
<p>The intention of this Period 8 option is to 'skill' boys in the mechanics of how to film an adventure or simple story piece. This is less about how to utilise equipment and more about the mechanics of trying to film something that is editable/usable. Although NWG will be doing the bulk of the teaching, other staff will be helping teach editing, sound and photography (including time lapse photography).</p> <p>Boys who sign up for this option will be expected to join in and film other activities on field days, school events, and occasionally school fixtures. During this option there will be a significant time commitment during period 8 and on field days. Consequently, only boys who have a significant interest in film and the use of film should apply. There is an annual fee of £65 for this option.</p>		
<b>Art Appreciation</b>	<b>ANR</b>	<b>5, L6, U6</b>
<p>The purpose of this activity is to introduce and improve your aesthetic and critical faculties so that you can not only develop your own personal taste but also improve your ability to articulate this cogently and without pretention.</p> <p>As well as hearing talks about art and aesthetics, watching the occasional TV programme, pupils will also prepare talks and PowerPoint presentation on a chosen Art historical/cultural topic. On field days we visit exhibitions and art collections in London. The school pays the entry for the FD visits, but boys have to purchase their own rail tickets to and from London.</p>		
<b>Bridge</b>	<b>MRJ</b>	<b>5</b>
<p>This option firstly teaches the participants to play bridge, both rubber and duplicate with occasional online play. The remaining time is spent practising and playing. On field days, the group takes part in locally-based hikes accompanied by staff. Field day sessions run from 0900 to 1600. Monday sessions end at 1620.</p>		
<b>CCF – All Sections</b>	<b>SJHY</b>	<b>5, L6, U6</b>
<p>The Combined Cadet Force at the RGS is made up of all three services. Cadets complete both theoretical and practical training on a Monday and utilise local military facilities on field days. Camps and courses run for all cadets both in the UK and overseas. The Fifth Form follow an advanced course relevant to the service they are in, as well as completing a Leadership and instruction course which they conclude in the Lower Sixth Form.</p> <p>During the Lower Sixth Form and then for the Upper Sixth, the boys are appointed into NCO positions and run the training. The CCF offers Adventurous Training Camps on a needs basis for senior boys. Last summer we ran an expedition to Malta. It is rare for new cadets to join the CCF in the Fifth and Sixth Forms without prior experience, but for those that are particularly keen it may be possible. Boys that are interested should contact SJHY (<a href="mailto:sjhy@rgsg.co.uk">sjhy@rgsg.co.uk</a>) to discuss further before submitting their forms. There is an annual charge of approximately £135.</p>		
<b>Community Service Group</b>	<b>RJR</b>	<b>5, L6, U6</b>
<p>The Community Service Group exists to give something back to the local community. We work in three main areas: visiting and elderly people in residential homes (including playing scrabble, debating and running an art class), helping with after-school clubs at primary schools, and serving in local charity shops.</p> <p>Boys are usually placed in pairs and make their way to their placement at 3.20pm on a Monday afternoon – most are no more than 5 minutes' walk away. Field Day 3 brings the whole community service group together for a tea party with guests from the different residential homes we visit. Entertainment is provided by the boys. Boys stay with their placement for the whole year. The key requirements for CS boys are reliability, trustworthiness and an interest in other people.</p> <p><b>Any boy wishing to join must see RJR to discuss his interest and to consider which placements are available and suitable.</b></p> <p>This activity has particular time commitments: Period 8 – boys should assume that they will be required to attend their placement for one hour; this means that they may be required until 5pm each Monday afternoon, but no later. Field Day – boys would normally attend their placement for a few hours on field day, rather than the whole day, in recognition of their extended time commitment on Period 8. There is no charge for this option.</p>		

<b>Contemporary Music</b>	<b>SJO/DL</b>	<b>5, L6, U6</b>
<p>Contemporary Music runs on Mondays from 1530 until 1630 under the supervision of Dave Locke and allows bands to fine-tune their output with advice on song-writing, technical advice on their given instrument and an insight into the recording and music technology side of the music business. On field days, boys will either practice further or perform in public. There is space for up to 3 groups (4 or 5 in each and already part of a band) to take part in this option. If the option is oversubscribed, groups will be asked to write a letter to SJHY supporting their application and may also include a recording of one track. The potential of the applications will be judged by SJHY in consultation with advice from the Music department and the successful groups will be judged on their efforts on an ongoing basis, with groups not using the time effectively being removed from the option. There is an annual charge of £105 for this option. Boys should have their own equipment and instruments for the sessions.</p>		
<b>Drama</b>	<b>NCM</b>	<b>5, L6, U6</b>
<p>Boys have the chance to explore, develop and perform drama pieces in a variety of styles. Over the year all pupils are given the chance to experiment with different styles of drama, write scripts and improve their performance skills. Boys will be expected to perform in front of their peers as a regular part of the option and some will take part in extra-curricular productions. Monday sessions last from 1520 to 1630. Field days involve workshops and performances run by professional theatre companies and visiting practitioners. In the last year we have had practical workshops on lighting, “trauma” make up, Commedia dell’Arte, writing and producing short films, and a trip to see a West End play. By joining the group, it must be understood that pupils may well be asked to commit themselves to assist in school productions, whether performing, helping backstage or front of house, or on the technical and props side. There will be a recharge fee of £60 to enable us to deliver the highest standard of workshops on Field Days, this will be charged at the end of the Michaelmas Term. Pupils will also be required to pay for their rail fare to London and back when attending a play on one of the Field Days. This year we will again be providing a Technical Theatre (stage lighting, stage management and sound design) strand to the option for those boys who are interested in gaining knowledge and experience in this area. If your son does choose Technical Theatre he will almost certainly be expected to support drama productions which may mean occasional evening and weekend commitments. Although the Technical Theatre strand is part of and thus opted for via the main Drama option, if you are interested in this strand then please also email SJHY (<a href="mailto:sjhy@rgsg.co.uk">sjhy@rgsg.co.uk</a>) stating this.</p>		
<b>Explorer Scouts</b>	<b>DP</b>	<b>5, L6, U6</b>
<p>The RGS Explorer Scouts takes place during Period 8 from 3.20 to 4.30pm. It accepts new members throughout the school and no previous membership of the Scout Association is necessary. The program is planned to include a range of indoor and outdoor activities throughout the year. Senior members have the opportunity to experience new activities as well as assist with the running of the unit and work towards their Young Leader Award. Silver and Gold DoE activities can also count towards the equivalent Scout awards of the Diamond Award and The Queens Scout Award. All Scouts are expected to attend the annual St. George’s Day parade at Guildford Cathedral. The Explorer Scouts have an enviable summer expedition program, visiting destinations in the UK and overseas; the most recent being Switzerland in Summer 2016 and water sports in Pembrokeshire in Summer 2017. All trips are open to all members of the unit and are subsidised by the funds raised through the Scout Council. Boys and their parents are expected to take part in fundraising through the car-parking on Saturdays. The annual charge will be £135, which includes field day activities and District Scout membership. Boys have to purchase the appropriate uniform and are expected to wear it to P8.</p>		

<b>Guildfordian</b>	<b>DA</b>	<b>L6, U6</b>
<p>Do you have your ear to the ground when it comes to School news? Can you write polite yet assertive emails to adults? Are you comfortable pestering lazy Second Form boys for overdue articles? Do you know the difference between a colon and a semi-colon? Can you spot small typos in long pieces of text? If your answer is 'yes' to all of the above then The Guildfordian team is calling you home! We read, write and edit articles at quite a pace throughout the year and on Field Days we proof read the formatted text. Sometimes we go out in the field to join other Period 8 options and take photos or write articles about what we see. There are editorial decisions to be made about what's in or not, the cover design and the photographs too. You don't have to study A Level English, but a love of words and an organised mind-set are appreciated.</p> <p>To be considered for a role on The Guildfordian please write an email of no more than 200 words explaining why you wish to be part of the team and why you are a suitable candidate. The emails should be addressed to Mr Amis (<a href="mailto:da@rgsg.co.uk">da@rgsg.co.uk</a>).</p>		
<b>Hiking</b>	<b>MMC</b>	<b>L6, U6</b>
<p>On Field Days and during P8 boys go on local walks and rambles accompanied by staff. Boys need to arrive promptly at 1520 ready to walk. Some walks may finish after 1630. When it is too dark to walk or the weather is bad, we will use the time to learn about popular hiking trails, study maps and plan routes. There is an annual charge of £15 towards transport costs on FDs and boys must reapply for selection to this option each year.</p>		
<b>Latin Primary School Project</b>	<b>NSGW</b>	<b>5, L6, U6</b>
<p>The Latin Primary Project will not run in 2018/19.</p>		
<b>Lifesaving, Swimming and Surfing</b>	<b>JAC</b>	<b>U6 only</b>
<p>Boys complete the Royal Lifesaving Society's Silver Lifesaving Award. Field days are spent surfing (or training for the Lifesaving examination). There is an extended time commitment on some Mondays and field days last 48 hours in Cornwall for which there is a charge of £120 per FD.</p>		
<b>Surf Science, fitness and practice</b>	<b>JAC</b>	<b>L6 only</b>
<p>Boys study all aspects of surfing including meteorology, oceanography, board design, surfing technique and fitness for the sport. There is an extended time commitment on Mondays and field days last 48 hours in Cornwall for which there is a charge of £120 per FD.</p>		
<b>Maths Primary Project</b>	<b>AWJJ</b>	<b>5, L6, U6</b>
<p>The Maths Primary Project offers the exciting opportunity for 12 RGS boys to work as a team to produce a programme to support and develop the mathematical fluency of pupils in Year 5 and 6 at Holy Trinity Pewley Down School. RGS pupils will learn techniques to teach basic skills in numeracy, shape and space to young children. They will develop skills to engage pupils who lack confidence in mathematics, as well as an ability to communicate their knowledge to pupils much younger than themselves. The structure of the course will include a handful of planning sessions throughout the course, as well as the delivery of around 15 sessions (due to last approximately 45 mins each). It will also include the planning and delivery of an afternoon in-school activity with the pupils from Holy Trinity Pewley Down School. You do not need to be in the top set for maths or be studying AS/A2 Mathematics in order to take part in this group. The skills I will be looking for are enthusiasm, organisation and an ability to communicate. If you are interested and need a little more information, please email Mr Jessett (<a href="mailto:awjj@rgsg.co.uk">awjj@rgsg.co.uk</a>). Any boys who wish to be considered for the Maths Project should arrange a short interview with Mr Jessett to check their suitability. Boys must reapply for selection to this option each year and priority will be given to boys who have not taken part previously.</p>		
<b>Mountain Biking</b>	<b>JSB</b>	<b>5, L6, U6</b>
<p>On Mondays, when the light is good, boys ride trails around the local area, during winter months boys complete technique work, fitness work, route planning and bike maintenance. On field days boys visit the local Surrey Hills with sites famous for mountain biking. Boys need to have their own mountain bikes and get them to school for the Mondays when they are required</p>		

as well as on field days. Boys must also provide their own safety equipment including a helmet. Some of the Monday sessions, when light is available, will be extended. There is a £15 annual charge for this activity.		
<b>Climbing</b>	<b>SWA</b>	<b>5, L6, U6</b>
In this option the boys will get the opportunity to experience climbing at a basic level. The activities should provide an appropriate level of challenge and need a reasonable level of physical fitness. The Period 8 lessons will be used to visit indoor climbing walls and prepare for Field Day trips. Monday sessions run weekly and end at 1700. "Climbing" will involve indoor bouldering and roped climbing and outdoor single pitch climbing at typical beginner venues. There is an annual charge of £170 for this option. Boys must reapply for selection to this option each year and priority will be given to boys who have not taken part previously.		
<b>Music Scholar Programme</b>	<b>SJO</b>	<b>5, L6, U6</b>
RGS Music Scholars who opt for this activity will undertake a programme of activities to enhance their general musicianship. During the weekly sessions, boys will follow a structured range of activities to develop their performance skills, both as soloists and part of an ensemble, aural awareness and techniques of composition. Boys will also be able to develop their wider musical understanding through music appreciation sessions. They will also have the opportunity to participate in a series of workshops and master classes given by visiting professional musicians as arranged by the department on Field Days. Participants may also take part in informal concerts in the wider community and other activities arranged by the department. Whilst this option is primarily aimed at RGS Music Scholars others are welcome to join at the discretion of the Assistant Director of Music and Assistant Head Co-curricular.		
<b>Outdoor Pursuits</b>	<b>KPT</b>	<b>5</b>
Outdoor Pursuits continues as an option in the Fifth Form for those who are currently in it and wish to do so. There may also be some places available for others, as boys leave the option. The programme of activities is operated on a carousel system with boys changing activity each half term. The sample Fifth Form programme contains Ultimate Frisbee, Mountain Biking and First Aid. Field Day activities include a visit to Calshot Spit activity centre, mountain biking and another activity centre tbc. The cost is approximately £195 per year.		
<b>Road Cycling</b>	<b>ETB</b>	<b>5, L6, U6</b>
Road Cycling is an increasingly popular form of exercise and this option is intended to both get you cycling in a group and also introduce you to road cycling culture. Most weeks (including during cold/wet weather) will involve circular rides based around Guildford on some of the country's finest road cycling routes. As both fitness levels and amount of daylight improve later in the year, sessions may go on beyond 4:30 as rides get longer. Participants will be confident and competent cyclists with some experience of riding bicycles on roads, have use of a suitable road or hybrid bicycle which they will bring to school each Monday (limited storage in school is available) and possess and use appropriate clothing, safety equipment and lights. Field days will involve cycling parts of the 2012 Olympic Road Race route and tackling the infamous Box Hill. If interested, please see ETB in advance to check that your bike is suitable (there is limited provision of school-owned bicycles if required). There is an annual charge of £15 for this option.		

<b>Set Construction Group</b>	<b>JBK</b>	<b>L6, U6</b>
<p>The Set Construction Group use Monday Period 8, field days and other times, (sometimes at weekends and the odd free period, in the lead up to when the school plays have to be assembled and then taken down) to construct sets and build props to support upcoming dramatic productions at the RGS. Boys need to have a confidence and experience in using a range of tools and materials but applications from all boys will be accepted and reviewed by JBK. The main criteria for selection is a willingness to get stuck in and be able to sort out technical problems in a self-directed fashion given that 'the show must go on' so the sets have to be finished come what may.</p>		
<b>Sports Coaching</b>	<b>BDU</b>	<b>5, L6, U6</b>
<p>The Community Sports Leaders Award is accredited by Sports Leaders UK. This course offers an opportunity for our students to learn and demonstrate important life skills, such as effective communication and organisation, whilst learning to lead a range physical activities. These activities will be delivered at the RGS and at local primary schools, offering the students experiences in a wide range of teaching situations. Students will be expected to assist (on a rota basis) with junior clubs on Monday evenings until 6pm. Sports Coaching is a one year option. There is an annual charge of £15 for this option.</p> <p>Boys must reapply for selection to this option each year and priority will be given to boys who have not taken part previously.</p>		